



PROPERTY FOR SALE

Rodd Field Rd & Airline Rd , Corpus Christi, TX

PROPERTY OVERVIEW

Land FOR SALE along the new growth area of Rodd Field Road in Corpus Christi, TX. The site provides a new opportunity directly across from a proposed HEB and across from Kolda Elementary School. Join the other retailers in the area such as Valero, Mr. D's Restaurant, Stripes, Panda, Popeyes, McDonalds, Whataburger, Burger King, and Walmart. The site is approximately 2 acres.

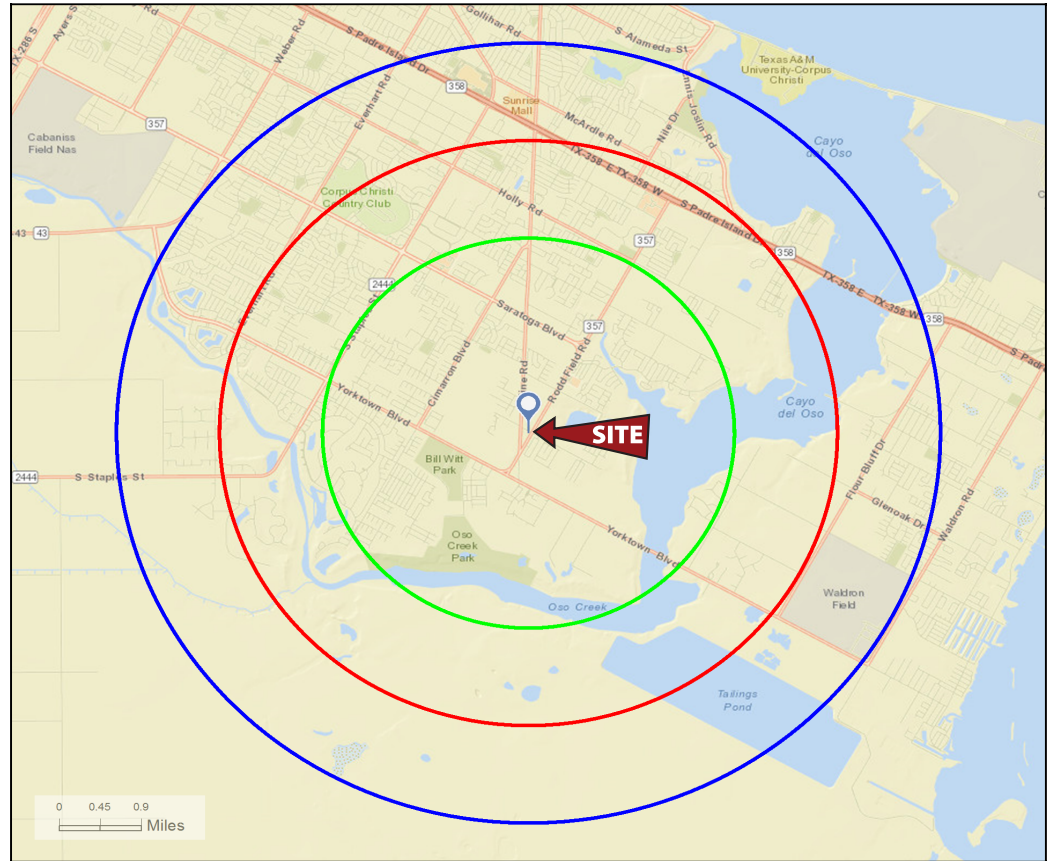
QUICK STATS

Demographics	2 mile	3 miles	4 miles
Population	31,560	65,584	101,658
Av. HH Income	\$99,575	\$81,824	\$79,278
Households	11,464	25,514	39,505

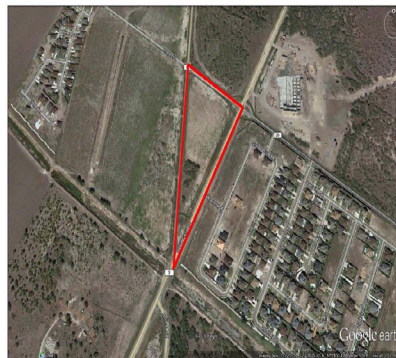
	Traffic Counts	Speed Limits
Roddfield	9,901 vpd	50 mph
Airline	4,060 vpd	45 mph

Stats	
MSA:	Corpus Christi
Property Type:	Raw Land
Use:	Retail, Office, & Restaurant
Available Date:	Currently
For Sale:	Call for Pricing
Lot 2:	1.33 +/- Acres
Lot 3:	2.0 +/- Acres

Contact:
Brent Glover
P.O. Box 18252
Corpus Christi, TX 78480
O: (817) 441-7400
M: (361) 946-8410
brentglover@msn.com



SITE PLAN



Location Map

SCALE: N.T.S.



Contact:
Brent Glover
P.O. Box 18252
Corpus Christi, TX 78480
O: (817) 441-7400
M: (361) 946-8410
brentglover@msn.com